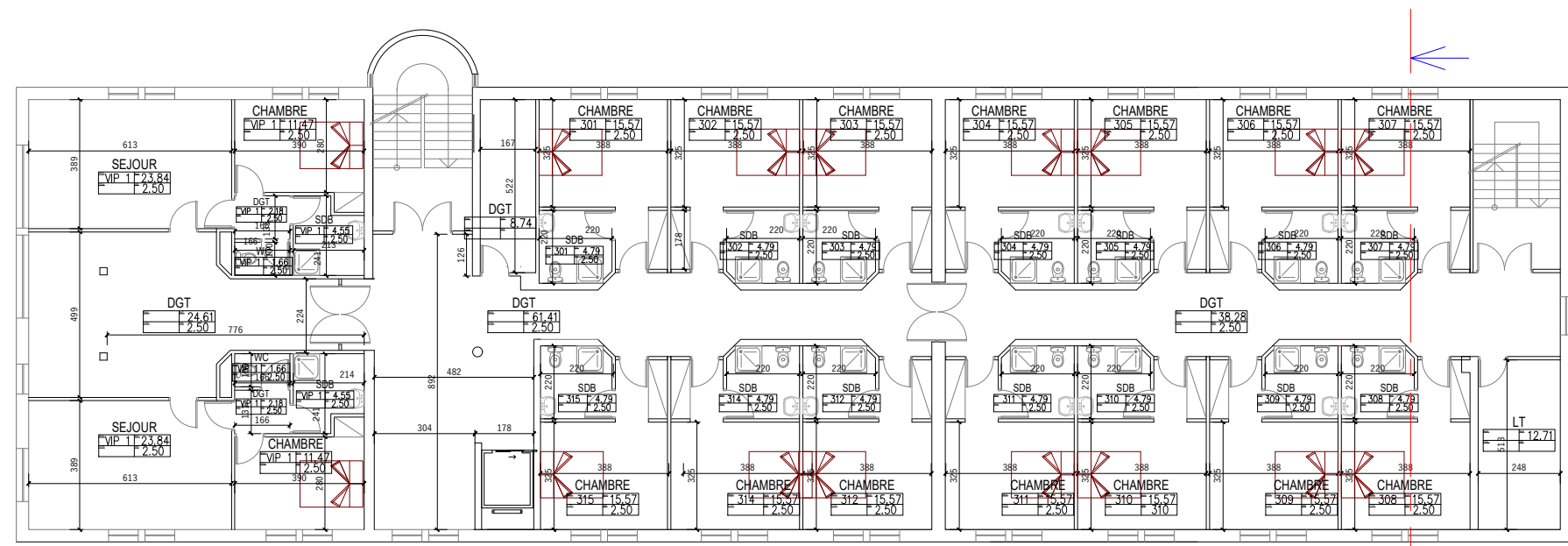
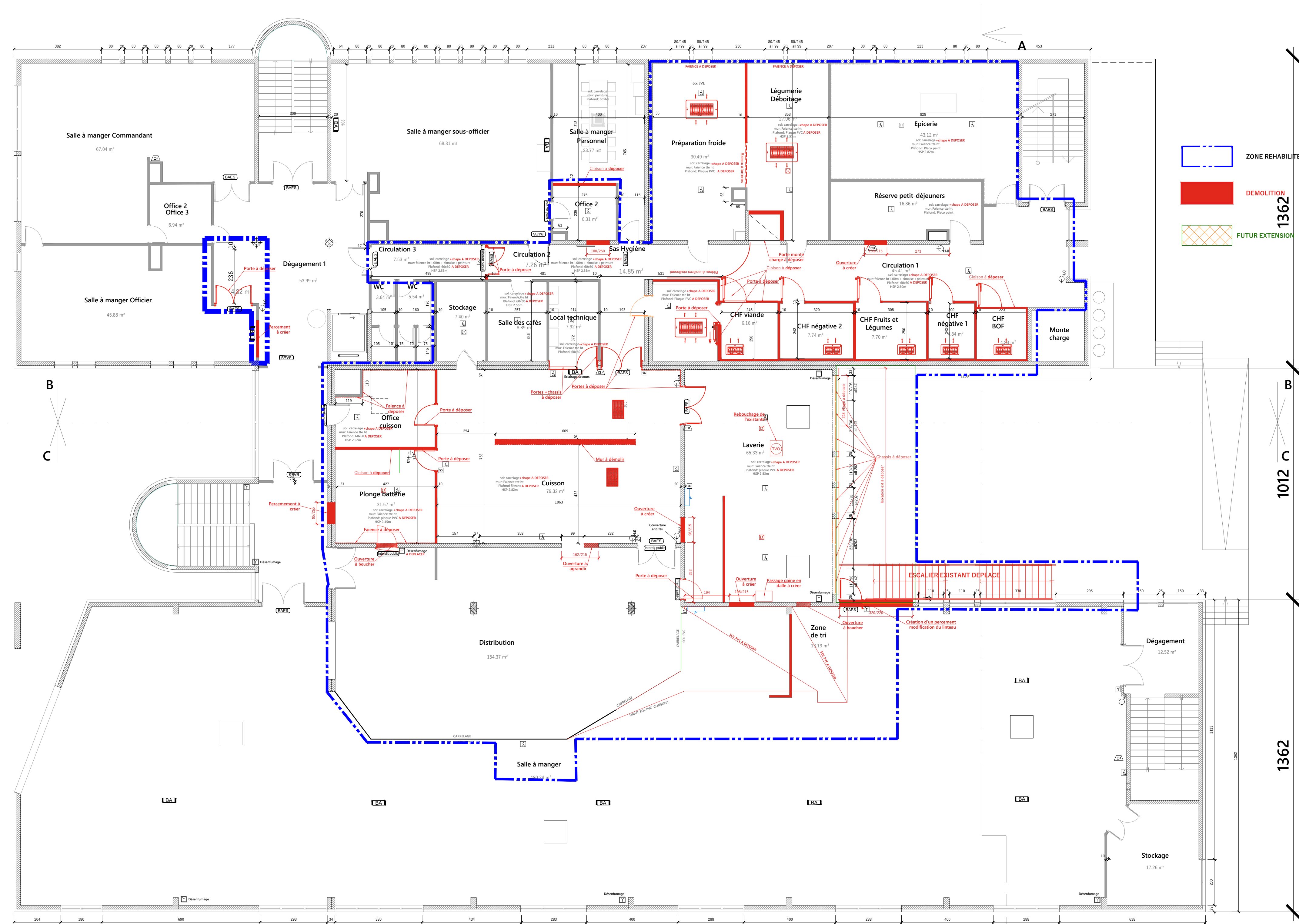


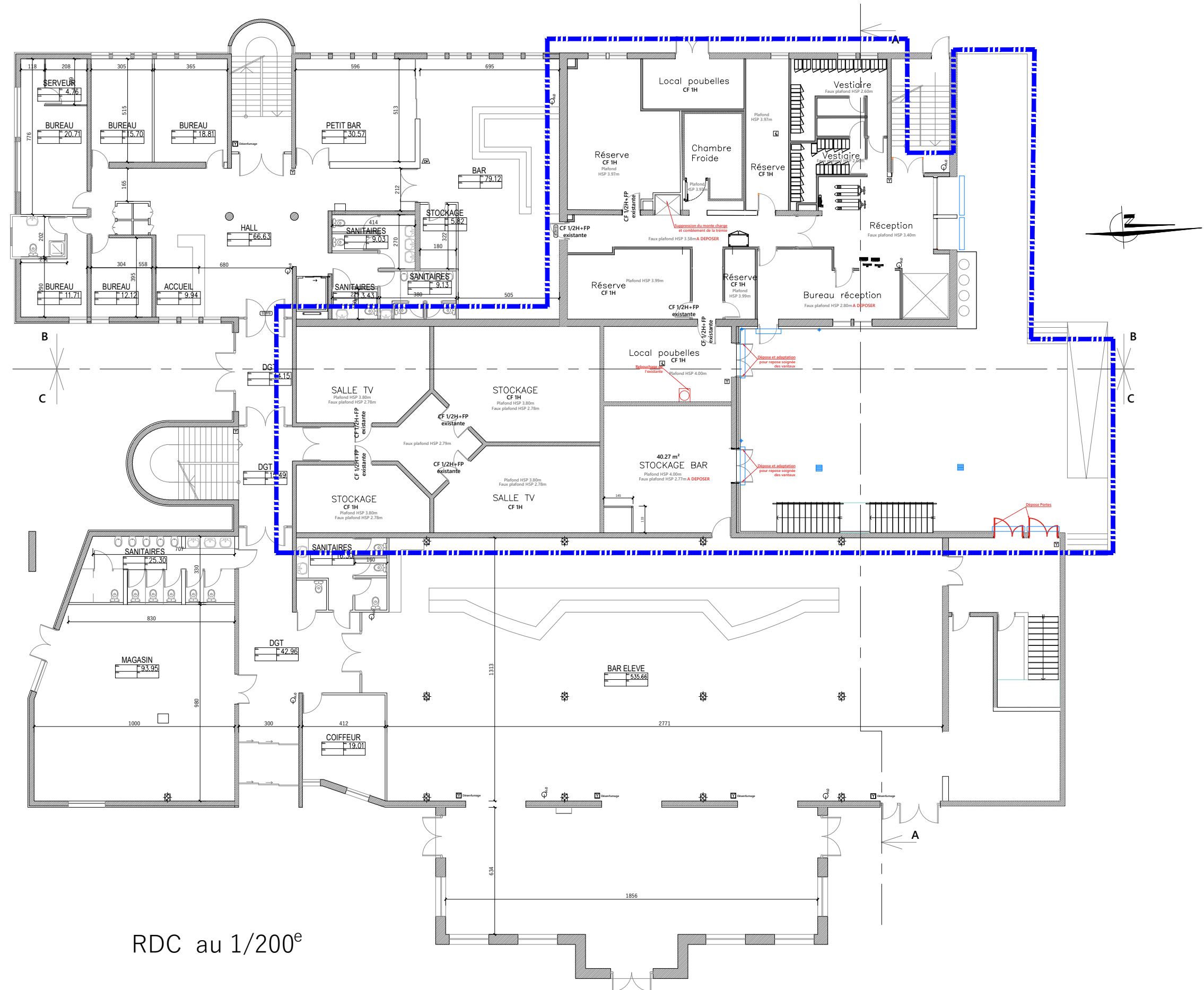
ETAGE 2 au 1/200°



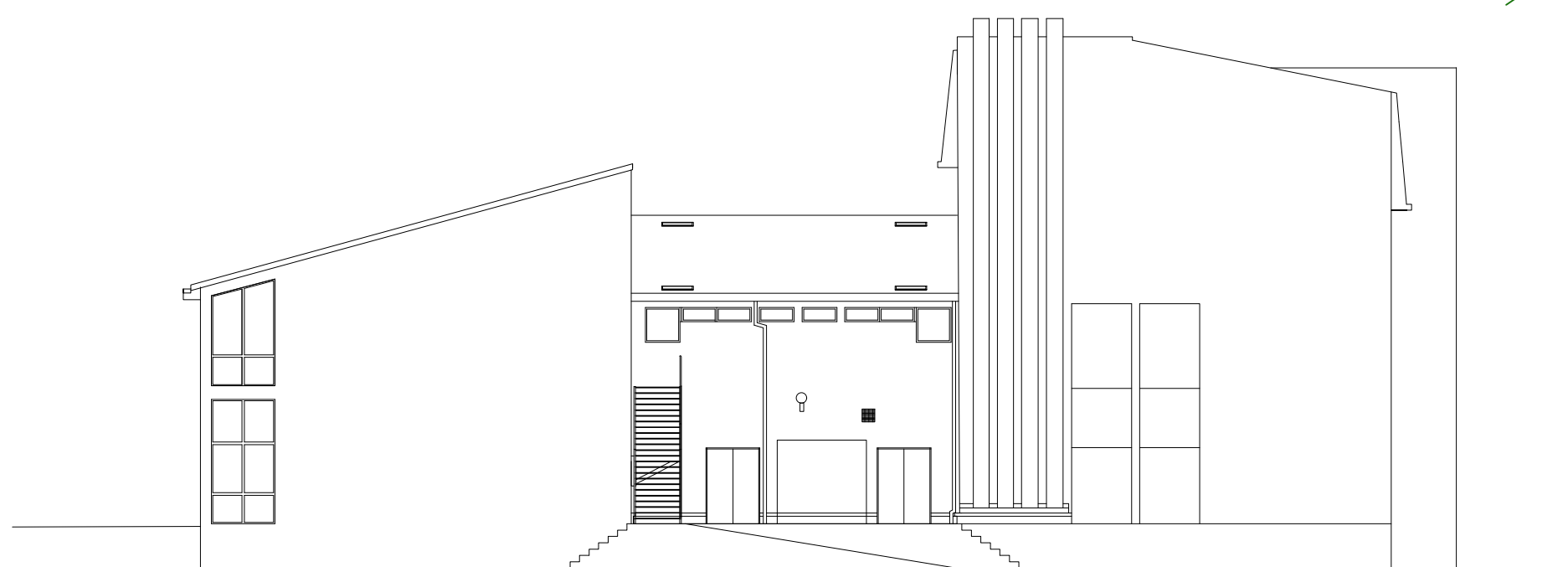
ETAGE 2 au 1/200°



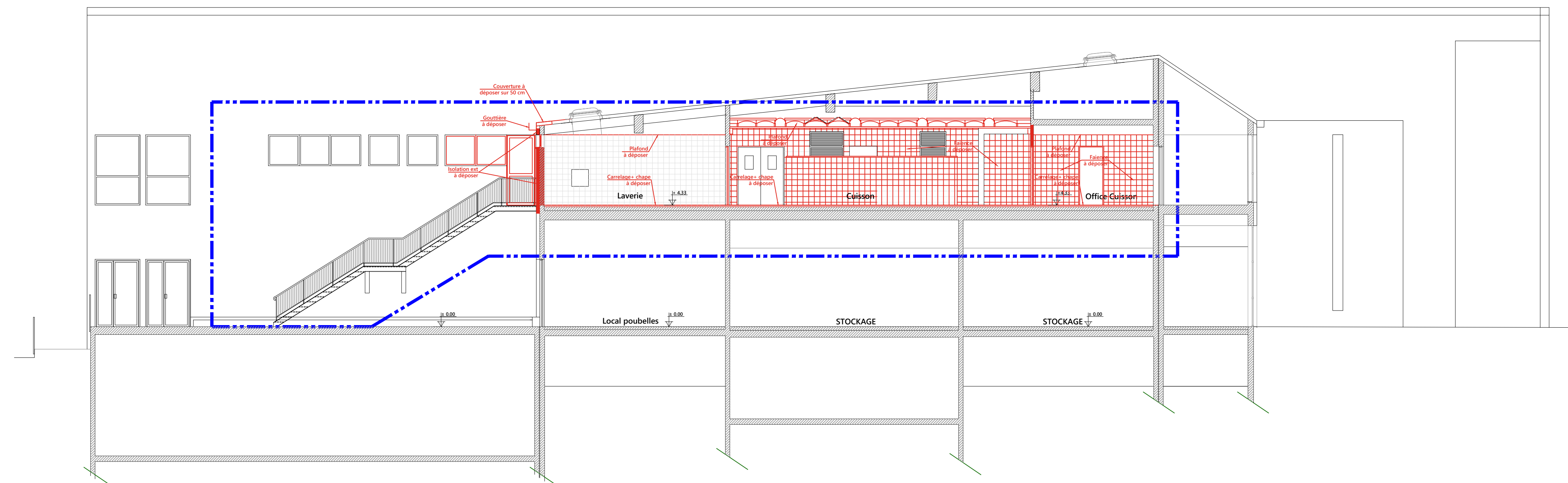
ETAGE 1 au 1/100°



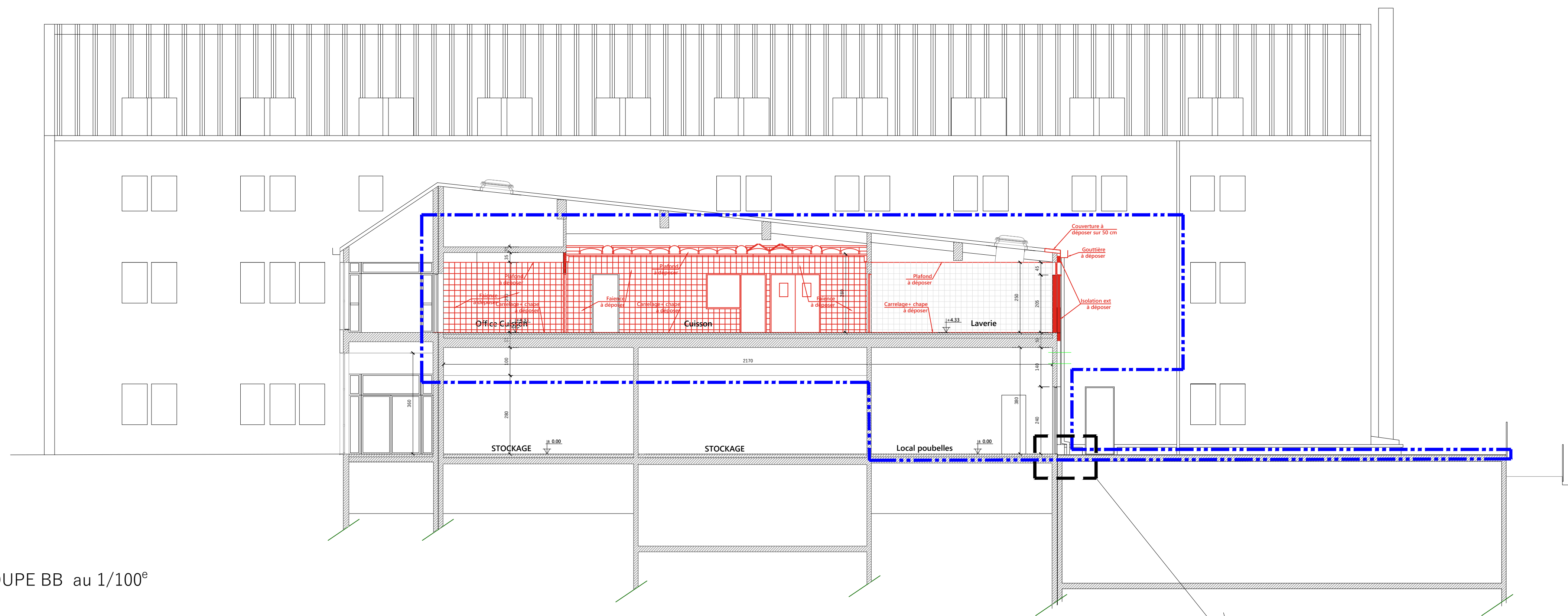
RDC au 1/200°



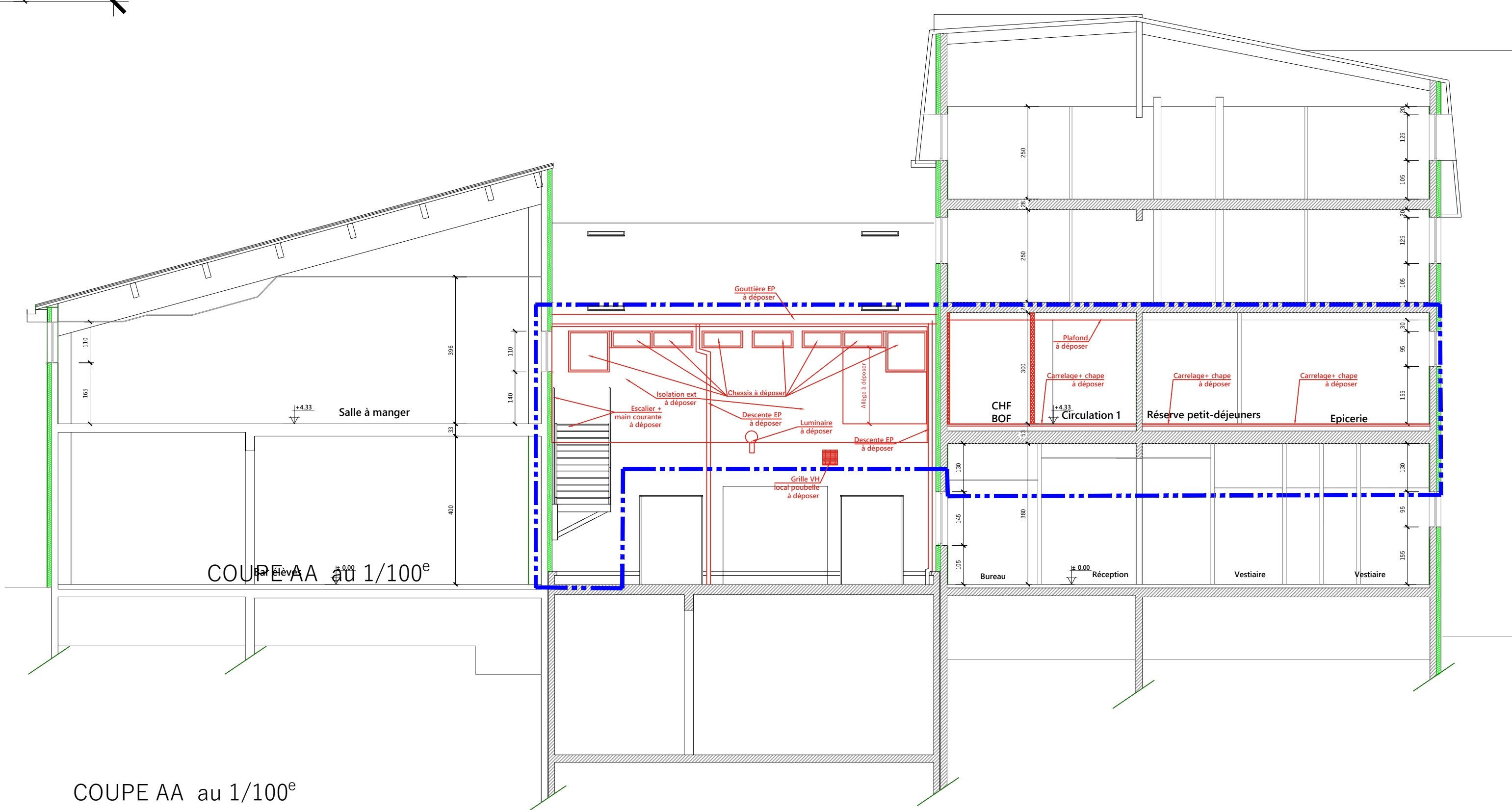
FACADE NORD au 1/200°



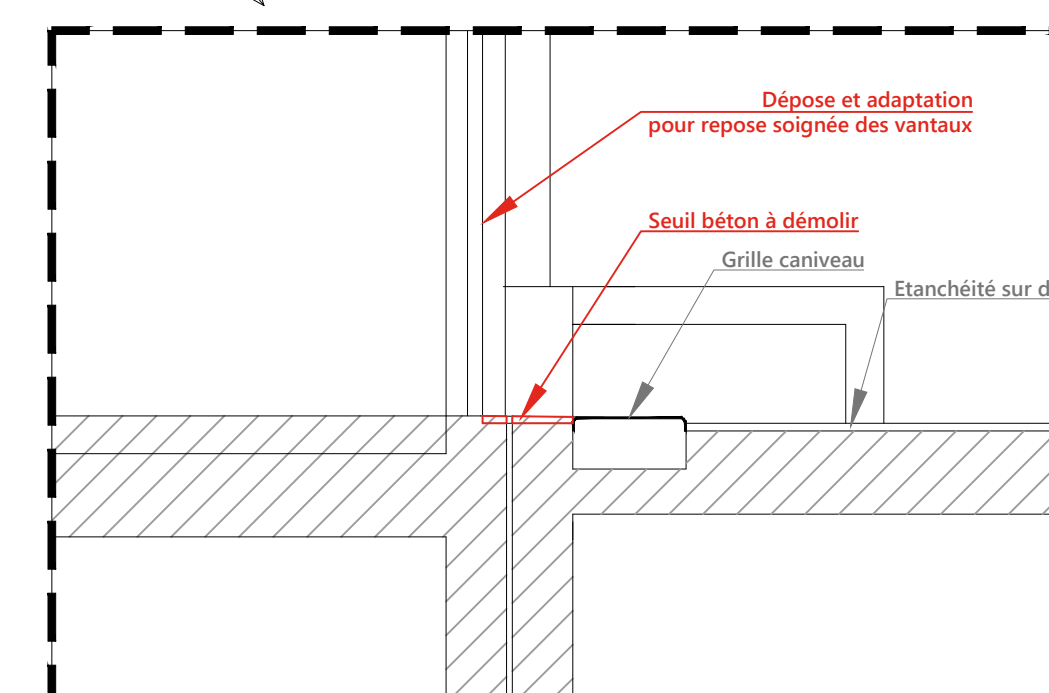
COUPE CC au 1/100°




COUPE BB au 1/100°



COUPE AA au 1/100°





Atelier d'Architecture
en Haute-Marne

Maîtrise d'Ouvrage : Ministère de l'Intérieur
1 Avenue du 109^e RI- 52000 CHAUMONT

Réfection de la cuisine du Cercle Mixte
Ecole de Gendarmerie
1 Avenue du 109^e RI
Chaumont (52000)

ETAT ACTUEL
Rez de chaussée - Etage 1-2-3
Coupes - Façades


PRO 02A	28.10.2025	M 905 AB 23	
DATE	REP	NATURE DES MODIFICATIONS	ETABLI

ATELIER
D'ARCHITECTURE
EN HAUTE-MARNE


1 Rue Raymond Sengibre
52000 CHAUMONT
Tél : +33(0)3 25 35 39 45
agence@atelier-architecte23.fr

S.A.R.L. au capital de 40 000 €
SIRET : 440 586 195 0003
Code APE : 7111Z


www.atelier-architecte23.fr




BETC



atec
ingenierie



Fluid'
CONCEPT



ATEC